



Bold LED Flood Lights are broad-beamed, high-intensity artificial lights. They are often used to illuminate outdoor playing fields while an outdoor sports event is being held during low-light conditions. The white beam of light produced by it is very much similar to daylight. When used in stadiums, it makes the spectators feel as though it is day time. Bold LED Flood Lights are impervious to temperature fluctuations and environmental conditions. Unlike some other lights, LEDs remain stable & functional even in freezing conditions. This makes them all the more ideal for cold warehouses and storage areas. Being free of Mercury, Lead and Carbon Emissions, Bold LED Flood Lights do not give out any harmful emissions such as carbon. As a result, they are much friendlier to the environment and also to the health of people nearby. What's more, they do not emanate heat and conserve the maximum amount of electricity, which also leads to longevity and safety. It is of IP Rate 67, which means its excellent performance in waterproof, Energy Friendly. LED flood lights eliminate the need for frequent bulb replacements, and you can save as much as 80% on electricity costs, Unaffected by Weather and Temperature Changes. Bold LED flood lights are impervious to temperature fluctuations and environmental conditions.

Description

Housing - Die-cast Aluminum

Diffuser - PMMA

Reflector - Aluminum Reflector

Color Available - RAL 5008 Gray Blue

Lifespan - >50,000 Hours (L90 B10)

Voltage - AC220-240V

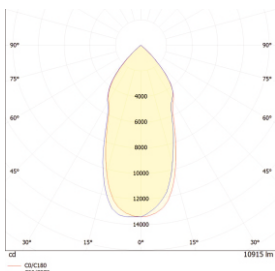
Working Temperature - -10C° ~ +65C°

IP Rating - 67

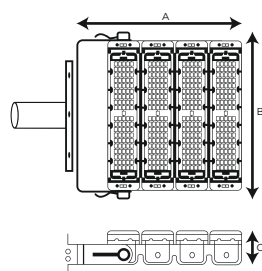
IK - 08

Item Code	Power	Lamp	Lumen	Dimensions
LP-FL3020150	150W	LED	27000lm	A350 x B240 x C75mm
LP-FL3020200	200W	LED	36000lm	A350 x B315 x C75mm
LP-FL3020300	300W	LED	54000lm	A350 x B395 x C75mm
LP-FL3020400	400W	LED	72000lm	A605 x B240 x C75mm
LP-FL3020600	600W	LED	108000lm	A665 x B315 x C75mm

Photometrics



Technical Drawing



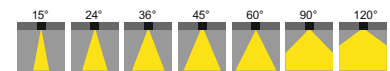
OUTDOOR LIGHTS BOLD

FLOOD LIGHTS

Kelvin

- 2700K - warm white, similar to incandescent bulb
- 3000K - soft white, similar to halogen bulb
- 4000K - bright white, similar to fluorescent lighting
- 5000K - daylight, very bright & similar to sunlight
- 6000K - cool white, blue tinted, like a monitor

Beam Angle



LED CHIP



LED DRIVER



This text is a standard disclaimer often found in product catalogs, brochures, or specification sheets. It informs customers that the company may update product specifications or materials at its discretion to improve the product, without prior notice, provided these changes do not affect its functionality. It also clarifies that the most up-to-date information is available on their website, which takes precedence over other sources.

If this is for inclusion in your materials, you might consider customizing it to match your company's policies or branding. Let me know if you'd like assistance tailoring it!



www.lightplus.uk