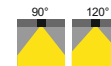




Kelvin

- 2700K – warm white, similar to incandescent bulb
- 3000K – soft white, similar to halogen bulb
- 4000K – bright white, similar to fluorescent lighting
- 5000K – daylight, very bright & similar to sunlight
- 6000K – cool white, blue tinted, like a monitor

Beam Angle



The Brighty light is direct lighting with louver anti-glare design. Adopt high lumen SMD chip and special lens which provide high light efficiency and uniform light output. It offers the ideal combination of stylish design and optimum performance for both task and general lighting.

LED CHIP



LED DRIVER

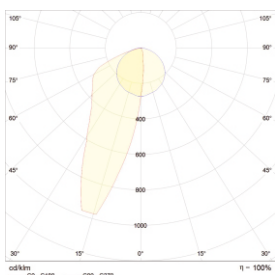


Description

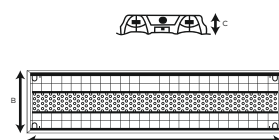
- Housing** - Body Manufactured in Cold-rolled Steel with Durable White Powder Coat Finish
- Diffuser** - Aluminum Louver Reflector with PC Opal
- Reflector** - Aluminium Reflector
- Color Available** - White (other colors available on request)
- Lifespan** - >50,000 Hours (L80 B10)
- Voltage** - AC200~240V
- Working Temperature** - -30C° ~ +65C°
- IP Rating** - 44
- IK** - 08

| Item Code | Power | Lamp | Lumen | Dimensions |
|--------------|-------|------|--------|----------------------|
| LP-PNL213036 | 36W | LED | 3600lm | A1195 x B295 x C60mm |
| LP-PNL213040 | 40W | LED | 4000lm | A1195 x B295 x C60mm |
| LP-PNL213048 | 48W | LED | 4800lm | A1195 x B295 x C60mm |

Photometrics



Technical Drawing



This text is a standard disclaimer often found in product catalogs, brochures, or specification sheets. It informs customers that the company may update product specifications or materials at its discretion to improve the product, without prior notice, provided these changes do not affect its functionality. It also clarifies that the most up-to-date information is available on their website, which takes precedence over other sources.

If this is for inclusion in your materials, you might consider customizing it to match your company's policies or branding. Let me know if you'd like assistance tailoring it!



www.lightplus.uk